

The following instructions are based on an install using Windows XP as the operating system. If you are installing to a Windows 98 machine please make sure that you have all the updates and patches installed before this installation.

Go to our website www.ifcorp.biz

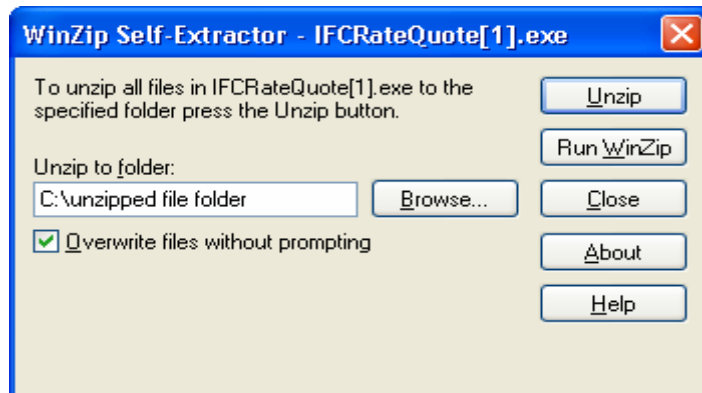
Scroll down to the bottom of the page and under the heading of **Rate Quote Diskette** you will find two different versions available to you:

Desktop Version – this would be installed on one computer for one user to access.

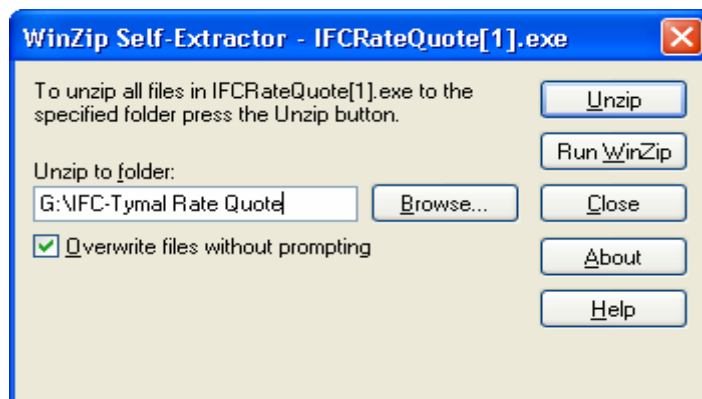
Network Version – this would be placed on a network drive and then installed from the network to each local computer. If you want multiple people to access the program this is the version to install.

Click on whichever link you decide to install. You can either open the file or save it to your computer. These instructions will assume that you open the file. The file size is 15.6 MB. It takes about 5 minutes to download on a DSL connection.

When the download is complete WinZip should ask you where you want to unzip the files. If you are installing the desktop version you need to unzip to a temporary folder on your local drive as shown in the example below. If you have a temporary folder to unzip these files to that you can locate later to install the application go ahead and use that. You don't have to create a new folder.



If you are installing to the network then unzip to a folder on your network drive similar to the example below.



Using explorer find and go to the directory where you unzipped the files. There should be 11 files. Find one that is called **Setup.exe** The file is about half way thru the list – it has a type of application and is about 45 KB in size.

Note: If you have downloaded the network version - from the local machine explore to the network drive and install to the local drive.

Double click on that file – this will start the install process.

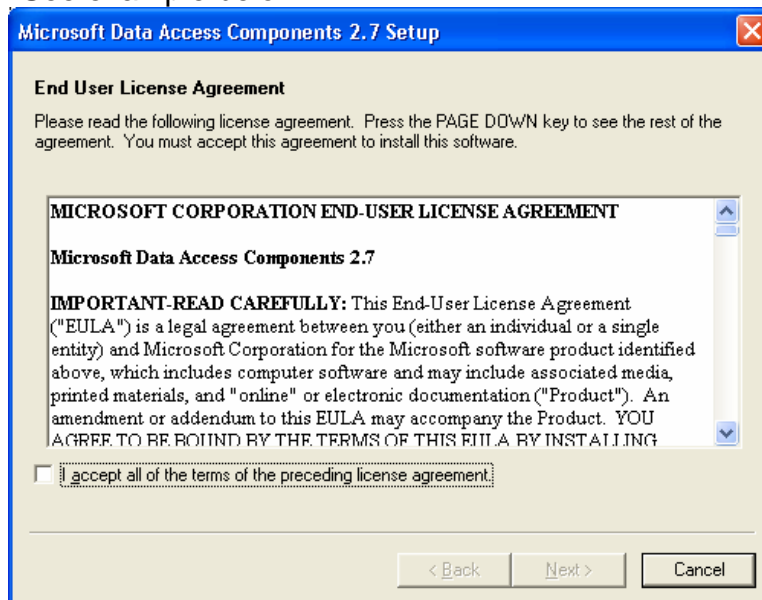
You will see the Install Shield Wizard screen – press next

A window will come up where it will suggest a directory name in which to install the program. Either accept this one or create a new one. Press next

The next window will ask to install the Program Folder named Rate Quote. I would suggest renaming to IFC Rate Quote. Press next

Next to start setup.

A window titled Microsoft Data Access Components will want you to accept the end user agreement. Click the box to accept. See example below.



Press next

Press Finish

Setup is complete – press close.

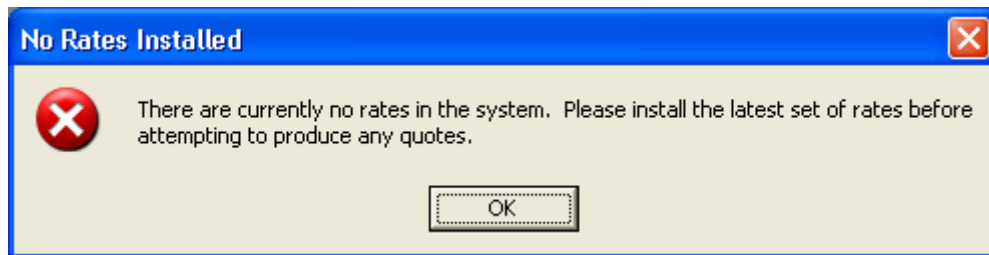
Restart your computer.

To add the icon to the desktop:

Press Start, All Programs, find the program called IFC Rate Quote, then IFCQuote. Right click and drag to the desktop and copy to the desktop.

Double click on the icon to start the application:

The program will come up with the following window telling you there are no rates in the system.



When you reach this point please call IFC and we will send you an email with the rates attached. Again this file will be zipped. Double click on the zipped file in the email and open the file. You then want to move or extract the file to your desktop.

Open up the IFC program – click ok on the no rates message. Go to **Data, Import Rates**, point it to look in your Desktop, select the file and click open. The program should tell you that the rates are successfully installed.

Go to Options – Default Values – down at the bottom click on set printer. Pick the printer you want to print from. Save and close.

Go to Options – User Preferences – Printing Options – I would suggest to uncheck “preview reports before printing”. You can determine if you want to uncheck “Display printer selection dialog box before printing”.